



Valve Locking Kit

VLK Series

INTRODUCTION

Holmbury's VLK Series are designed to suit a wide range of Ball Valve applications.

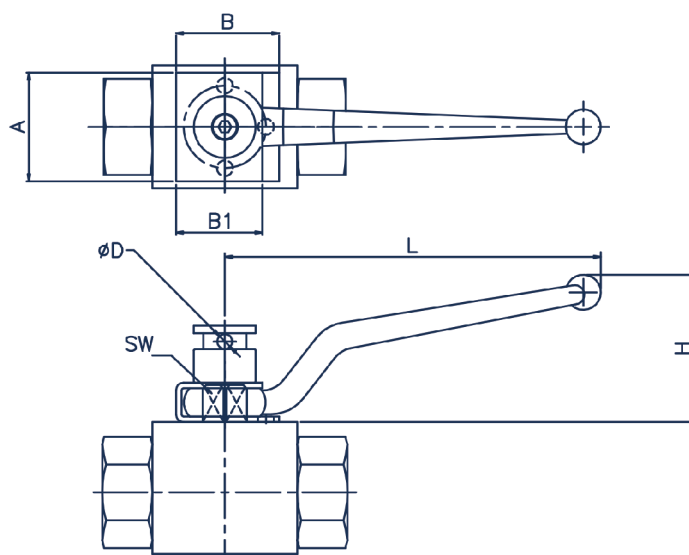


CARBON
STEEL
TRIVALENT

SPECIFICATIONS

- To suit Holmbury Ball Valve Range with Ball Valve Stem SW (A/F) 9, 14 & 17

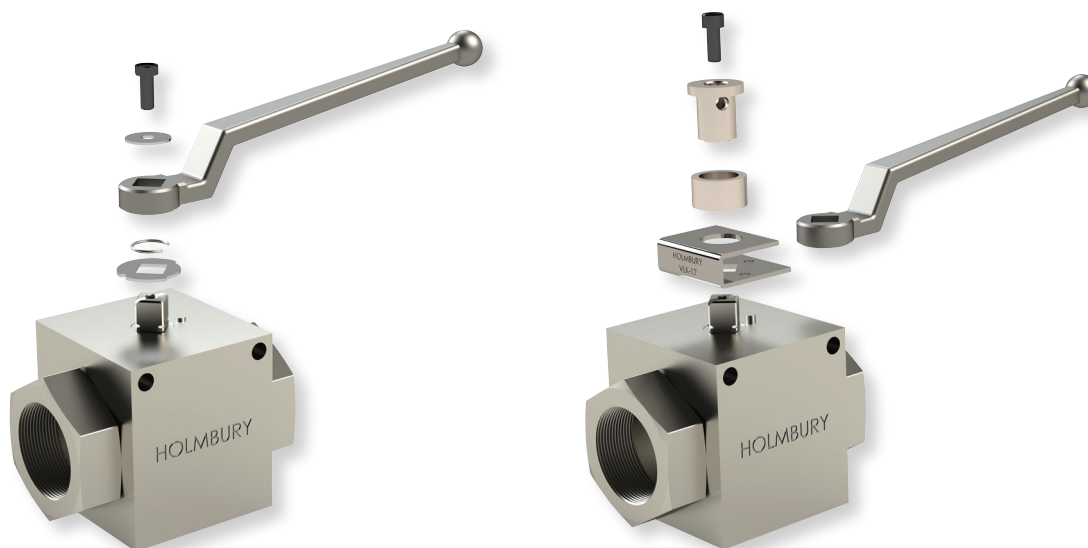




VLK Series

Part Number	DN	SW (Ball Valve Stem)	A	B	B1	D	H	L
VLK-9	4 - 12	9	32	34	28	6	28	6
VLK-14	20 - 25	14	50	50	41	8	41	8
VLK-17	32 - 50	17	58	55	46	8	46	8

Locking Device Assembly Instructions



STEP 1.

Remove the retaining screw / washer, handle, spring retainer ring / clip and cam plate from the ball valve.

STEP 2.

Insert the ball valve handle into the locking bracket.

STEP 3.

Place the ball valve handle and locking bracket onto the ball valve.

STEP 4.

Add the locking mechanism onto the ball valve and tighten with a hex key.

Further technical information and 3D CAD models available from our sales office.

