



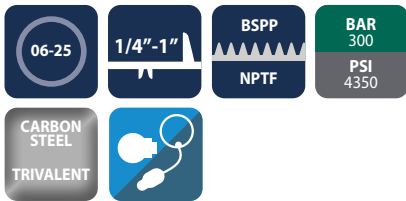
Screw to connect and pull break couplings

PLC Series



INTRODUCTION

Holmbury's PLC Series screw to connect couplings allow for connection under pressure and are ideal choice for agricultural applications with high pressure pulses.



CONSTRUCTION

- Carbon steel with trivalent plating
- Fitted with NBR seals

FEATURES

- Screw connection only possible with both halves of PLC Series
- Interchangeable with ISO A Series male (Size 1/2" ISO A only)
- Screw to connect design eliminates brinelling
- Can be connected with residual pressure in the system
- Bidirectional flow

ACCESSORIES

- Dust caps, plugs and seal kits are available for the PLC Series

SPECIFICATIONS

- Operating temperatures (with NBR seals): -40°C (-40°F) to 106°C (223°F)

APPLICATIONS

- Agricultural applications
- General industrial
- Snow ploughs

PLC PERFORMANCE CHARACTERISTICS

Body Size	PLC06	PLC10	PLC12	PLC19	PLC25
	Pressure in bar - Flow in LPM				
	Pressure in PSI - Flow in GPM				
Maximum working pressure (Coupled)	300 4350	300 4350	300 4350	280 4060	250 3625
Burst pressure (Coupled)	1600 23200	1600 23200	1600 23200	1300 18850	1200 17400
Burst pressure (Male)	1600 23200	1600 23200	1550 22475	1300 18850	1200 17400
Burst pressure (Female)	1550 22475	1550 22475	1500 21750	1300 18850	1100 15950
Rated flow	3 0.8	23 6.1	45 12	106 28	189 50

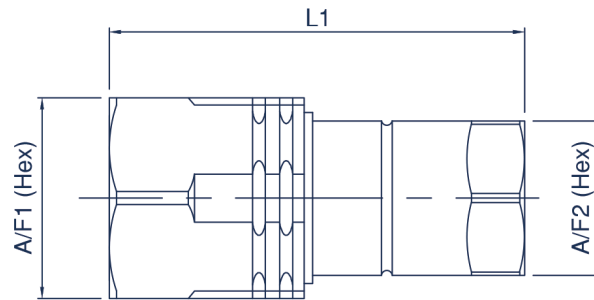
CAPS/PLUGS ACCESSORIES

FEMALE PLUGS	MALE CAPS
PLC06-F-PLUG	PLC06-M-CAP
PLC10-F-PLUG	PLC10-M-CAP
PLC12-F-PLUG	PLC12-M-CAP
PLC19-F-PLUG	PLC19-M-CAP
PLC25-F-PLUG	PLC25-M-CAP

Standard material is aluminium

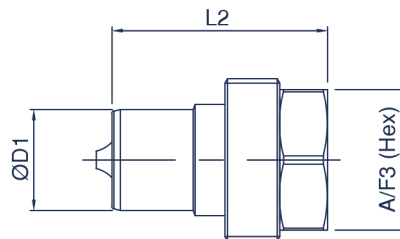
SEAL KITS

PLC06-F-SEAL KIT
PLC10-F-SEAL KIT
PLC12-F-SEAL KIT
PLC19-F-SEAL KIT
PLC25-F-SEAL KIT



PLC FEMALE COUPLING

Body Size	Part Number	Thread Size	A/F1		L1		A/F2	
			mm	inch	mm	inch	mm	inch
06 (1/4)	PLC06-F-04G	1/4 BSPP	27.0	1.06	66.0	2.60	19.0	0.75
	PLC06-F-04N	1/4 NPTF	27.0	1.06	66.0	2.60	19.0	0.75
	PLC06-F-06S	9/16-18 UNF	27.0	1.06	66.0	2.60	19.0	0.75
10 (3/8)	PLC10-F-06G	3/8 BSPP	34.0	1.34	76.0	2.99	24.0	0.94
	PLC10-F-06N	3/8 NPTF	34.0	1.34	76.0	2.99	24.0	0.94
	PLC10-F-06S	9/16-18 UNF	34.0	1.34	76.0	2.99	24.0	0.94
12 (1/2)	PLC12-F-08G	1/2 BSPP	38.0	1.50	82.0	3.23	27.0	1.06
	PLC12-F-08N	1/2 NPTF	38.0	1.50	82.0	3.23	27.0	1.06
	PLC12-F-08S	3/4-16 UNF	38.0	1.50	82.0	3.23	27.0	1.06
19 (3/4)	PLC19-F-12G	3/4 BSPP	50.0	1.97	105.0	4.13	34.0	1.34
	PLC19-F-12N	3/4 NPTF	50.0	1.97	105.0	4.13	34.0	1.34
	PLC19-F-12S	1 1/16-12 UN	50.0	1.97	105.0	4.13	34.0	1.34
25 (1)	PLC25-F-16G	1 BSPP	55.0	2.17	125.0	4.92	41.0	1.61
	PLC25-F-16N	1 NPTF	55.0	2.17	125.0	4.92	41.0	1.61
	PLC25-F-16S	1 5/16-12 UN	55.0	2.17	125.0	4.92	41.0	1.61



PLC MALE COUPLING

Body Size	Part Number	Thread Size	D1		L2		A/F3	
			mm	inch	mm	inch	mm	inch
06 (1/4)	PLC06-M-04G	1/4 BSPP	14.2	0.56	33.0	1.30	19.0	0.75
	PLC06-M-04N	1/4 NPTF	14.2	0.56	33.0	1.30	19.0	0.75
	PLC06-M-06S	9/16-18 UNF	14.2	0.56	33.0	1.30	19.0	0.75
10 (3/8)	PLC10-M-06G	3/8 BSPP	19.0	0.75	40.5	1.59	24.0	0.94
	PLC10-M-06N	3/8 NPTF	19.0	0.75	40.5	1.59	24.0	0.94
	PLC10-M-06S	9/16-18 UNF	19.0	0.75	40.5	1.59	24.0	0.94
12 (1/2)	PLC12-M-08G	1/2 BSPP	20.5	0.81	49.0	1.93	27.0	1.06
	PLC12-M-08N	1/2 NPTF	20.5	0.81	49.0	1.93	27.0	1.06
	PLC12-M-08S	3/4-16 UNF	20.5	0.81	49.0	1.93	27.0	1.06
19 (3/4)	PLC19-M-12G	3/4 BSPP	28.0	1.10	62.0	2.44	34.0	1.34
	PLC19-M-12N	3/4 NPTF	28.0	1.10	62.0	2.44	34.0	1.34
	PLC19-M-12S	1 1/16-12 UN	28.0	1.10	62.0	2.44	34.0	1.34
25 (1)	PLC25-M-16G	1 BSPP	31.3	1.23	73.0	2.87	41.0	1.61
	PLC25-M-16N	1 NPTF	31.3	1.23	73.0	2.87	41.0	1.61
	PLC25-M-16S	1 5/16-12 UN	31.3	1.23	73.0	2.87	41.0	1.61

For all other configurations or thread types please contact the sales office.