



## Valve Locking Kit

### VLKT Series

#### INTRODUCTION

Holmbury's VLKT Series are designed to suit a wide range of Ball Valve applications.

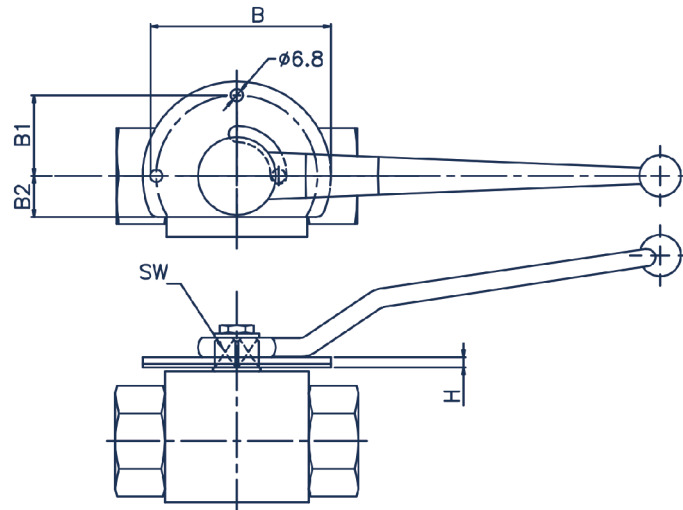


CARBON  
STEEL  
TRIVALENT

#### SPECIFICATIONS

- To suit Holmbury Ball Valve Range with Ball Valve Stem SW (A/F) 9, 14 & 17

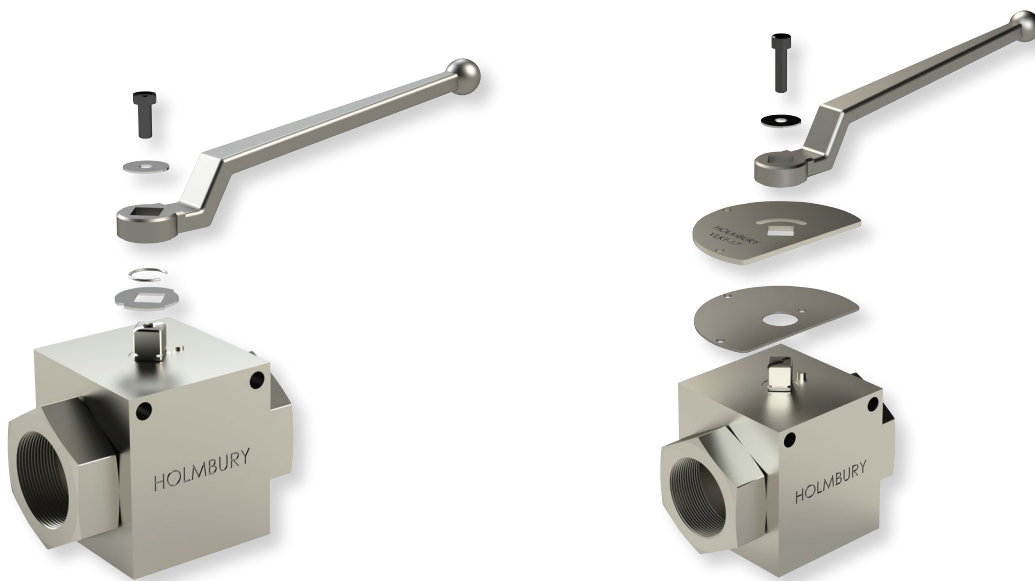




### VLKT Series

Part Number	DN	SW (Ball Valve Stem)	B	B1	B2	H
VLKT-9	4 - 12	9	61	24	10	3.5
VLKT-14	20 - 25	14	84	35.5	14	4.5
VLKT-17	32 - 50	17	136	61.5	18	4.5

## Locking Device Assembly Instructions



#### STEP 1.

Remove the retaining screw / washer, handle, spring retainer ring / clip and cam plate from the ball valve

#### STEP 2.

Place the lower positioning plate onto the ball valve.

#### STEP 3.

Place the lockable positioning plate onto the ball valve.

#### STEP 4.

Add the handle and washer and tighten with a hex key.

Further technical information and 3D CAD models available from our sales office.

