



# Connect under pressure high flow couplings fitted with a safety locking sleeve

## F (Nordic) Series



### INTRODUCTION

Holmbury's F Series 'Nordic interchange' high flow safety couplings offer three important benefits; high flow, connection under pressure and a safety locking mechanism to prevent accidental disconnection.



### CONSTRUCTION

- Carbon steel with zinc nickel plating (1200 hours with no red rust in salt spray tests)
- Fitted with NBR seals (Other seals available on request)
- Also available in stainless steel (see FS Series)

### FEATURES

- High flow rates
- Optional pressure eliminator allows connection with residual pressure in the hydraulic circuit (Not applicable for size 06)
- Low pressure drop characteristics
- Safety locking ring to avoid accidental disconnection

- Female half has double 'O' ring sealing arrangement
- Bidirectional flow

### ACCESSORIES

- Dust caps, plugs and seal kits are available for the F Series

### SPECIFICATIONS

- Operating temperatures (with NBR seals): -40°C (-40°F) to 106°C (223°F)

### APPLICATIONS

- Mobile plant
- General industrial
- Forestry equipment

### F (Nordic) PERFORMANCE CHARACTERISTICS

Body Size	F06	F10	F12	F19	F25
	Pressure in bar - Flow in LPM				
	Pressure in PSI - Flow in GPM				
Maximum working pressure (Coupled)	600	350	315	300	260
	8702	5076	4569	4351	3771
Burst pressure (Coupled)	2100	1500	1300	1250	1100
	30458	21756	18855	18130	15954
Burst pressure (Male)	2100	1500	1250	1250	1100
	30458	21756	18130	18130	15954
Burst pressure (Female)	1500	1450	1200	1200	1000
	21756	21030	17405	17405	14504
Rated flow	3	23	45	106	189
	0.8	6.1	12	28	50

### CAPS/PLUGS ACCESSORIES

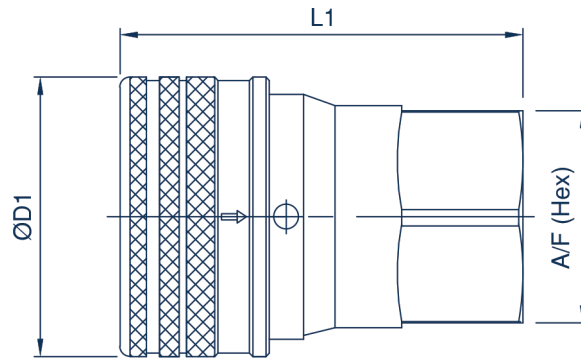
FEMALE PLUGS	MALE CAPS
F06-F-PLUG	F06-M-CAP
F10-F-PLUG	F10-M-CAP
F12-F-PLUG	F12-M-CAP
F19-F-PLUG	F19-M-CAP
F25-F-PLUG	F25-M-CAP

Standard colour is red pvc

### SEAL KITS

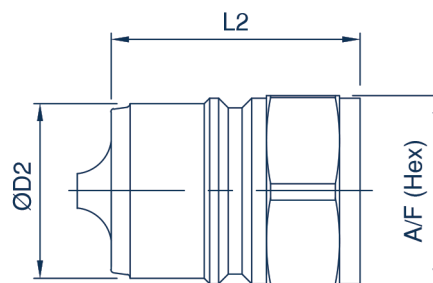
F06-F-SEAL KIT
F10-F-SEAL KIT
F12-F-SEAL KIT
F19-F-SEAL KIT
F25-F-SEAL KIT

## F (Nordic) Series



### F (Nordic) FEMALE COUPLING

Body Size	Part Number	Thread Size	D1		L1		A/F	
			mm	inch	mm	inch	mm	inch
06 (1/4)	F06-F-04G	1/4 BSPP	26.0	1.02	60.5	2.38	20.0	0.79
10 (3/8)	F10-F-06G	3/8 BSPP	34.0	1.38	60.0	2.36	24.0	0.94
	F10-F-06G-PE	3/8 BSPP	34.0	1.38	60.0	2.36	24.0	0.94
12 (1/2)	F12-F-08G	1/2 BSPP	40.0	1.75	65.1	2.56	30.0	1.18
	F12-F-08G-PE	1/2 BSPP	40.0	1.75	65.1	2.56	30.0	1.18
19 (3/4)	F19-F-12G	3/4 BSPP	52.0	2.13	74.5	2.93	38.0	1.50
	F19-F-12G-PE	3/4 BSPP	52.0	2.13	74.5	2.93	38.0	1.50
25 (1)	F25-F-16G	1 BSPP	62.0	2.52	88.5	3.48	45.0	1.77
	F25-F-16G-PE	1 BSPP	62.0	2.52	88.5	3.48	45.0	1.77



### F (Nordic) MALE COUPLING

Body Size	Part Number	Thread Size	D2		L2		A/F	
			mm	inch	mm	inch	mm	inch
06 (1/4)	F06-M-04G	1/4 BSPP	11.9	0.47	49.0	1.93	19.0	0.75
10 (3/8)	F10-M-06G	3/8 BSPP	20.0	0.79	38.0	1.50	22.0	0.87
	F10-M-06G-PE	3/8 BSPP	20.0	0.79	38.0	1.50	22.0	0.87
12 (1/2)	F12-M-08G	1/2 BSPP	25.0	0.98	41.5	1.63	27.0	1.06
	F12-M-08G-PE	1/2 BSPP	25.0	0.98	41.5	1.63	27.0	1.06
19 (3/4)	F19-M-12G	3/4 BSPP	33.0	1.30	46.5	1.83	36.0	1.42
	F19-M-12G-PE	3/4 BSPP	33.0	1.30	46.5	1.83	36.0	1.42
25 (1)	F25-M-16G	1 BSPP	41.0	1.61	54.5	2.15	46.0	1.81
	F25-M-16G-PE	1 BSPP	41.0	1.61	54.5	2.15	46.0	1.81

For all other configurations or thread types please contact the sales office.