



## Three-way high-pressure ball valves

### BVC3 (Manifold Type)



#### INTRODUCTION

Holmbury's BVC3 Series three-way manifold type high-pressure ball valves are designed to suit a wide range of applications. These valves should not be used as flow control valves and should therefore always be fully open or closed.



#### CONSTRUCTION

- Carbon steel body with trivalent plating
- Zinc alloy handle
- Forged steel option available
- Fitted with NBR and POM seals as standard
- Also available in AISI 316 stainless steel (See BVS3 Series)

#### FEATURES

- Floating ball design maximises sealing
- Full bore valves provide unrestricted flow path for negligible pressure drop
- Open to close in 1/4 turn
- Offset handle allows clearance for easy operation

#### ACCESSORIES

- Valve locking kits and valve handles are available for the BVC3 Series

#### SPECIFICATIONS

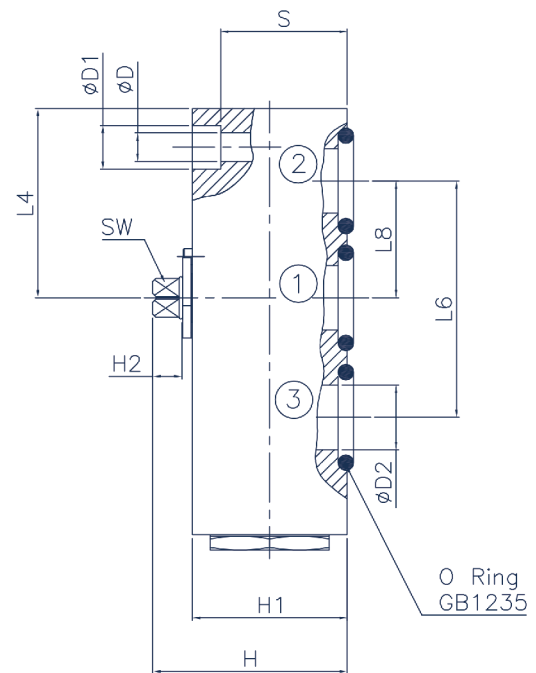
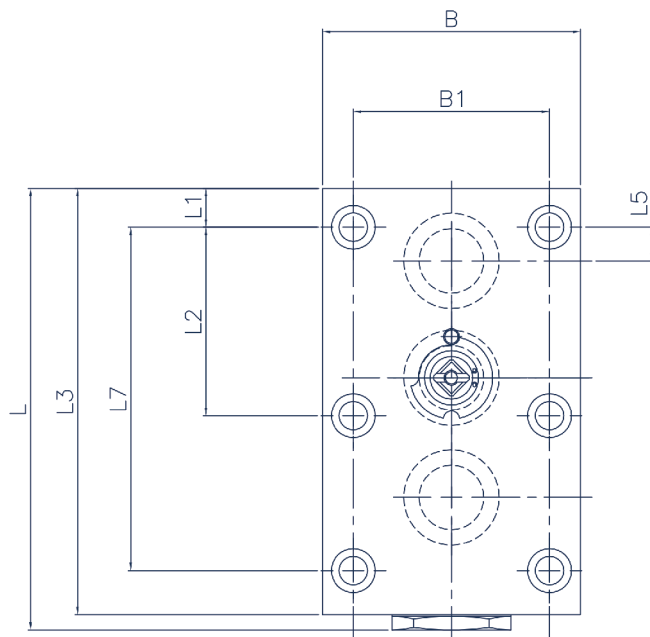
- Operating temperatures (With NBR seals): -40°C (-40°F) to 106°C (223°F)
- BVC3 - Ball Valve - Square Body (DN06-50)

#### APPLICATIONS

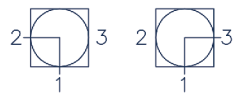
- Construction
- Mobile Hydraulics
- Test Equipment
- Machine Tools
- General Hydraulics
- Agricultural

#### BVC3 PERFORMANCE CHARACTERISTICS

Body Size	BVC3M06	BVC3M10	BVC3M16	BVC3M19	BVC3M25	BVC3M32	BVC3M40	BVC3M50
	Pressure in bar - Flow in LPM Pressure in PSI - Flow in GPM							
Maximum working pressure	500 7250	500 7250	400 5800	315 4568	315 4568	315 4568	315 4568	315 4568
Burst pressure	2000 29000	2000 29000	1600 23200	1260 18270	1260 18270	1260 18270	1260 18270	1260 18270
Rated flow	12 3.2	23 6.1	74 20	100 26.4	189 50	250 66	379 100	757 200



L Type  
(90° Reversing)



### BVC3 (Manifold Type)

Part Number	DN	PN	L	L1	L2	L3	L4	L5	L6	L7	L8	B	B1	H	H1	H2	D	D1	D2	S	SW	O Ring GB1235
BVC3M-06	06	315	64	8.5	0	59	25	0	35	35	17.5	40	27	39	30	6	6.6	11	6	23	9	12x1.9
BVC3M-10	10	315	80	8	27.5	71	29.5	2.5	44	55	19	56	40	54.5	42	8	9	13.5	9.5	33	9	16x2.4
BVC3M-16	16	315	110	8.5	41.5	100	43.5	8.5	58	83	26.5	62	45	67.5	50	11	9	13.5	16	41	12	25x2.4
BVC3M-19	19	315	127	10	48.5	117	51	10	69	97	32	70	51	80	62	12	10.5	16.5	20	51	14	30x3.1
BVC3M-25	25	315	145	10	57.5	135	62	14	81	115	38	80	60	85	67	12	10.5	16.5	25	56	14	35x3.1
BVC3M-32	32	315	177	12	68	165	75	17	96	136	46	100	78	110	90	14	13	19	32	77	17	40x3.1
BVC3M-40	40	315	192	28.5	56	180	85.5	0	112	112	56	130	95	120	100	14	17.5	26	38	82	17	50x3.1
BVC3M-50	50	315	245	38	68	220	106	0	136	136	58	149	112	130	110	14	22	33	48	88	17	60x3.1