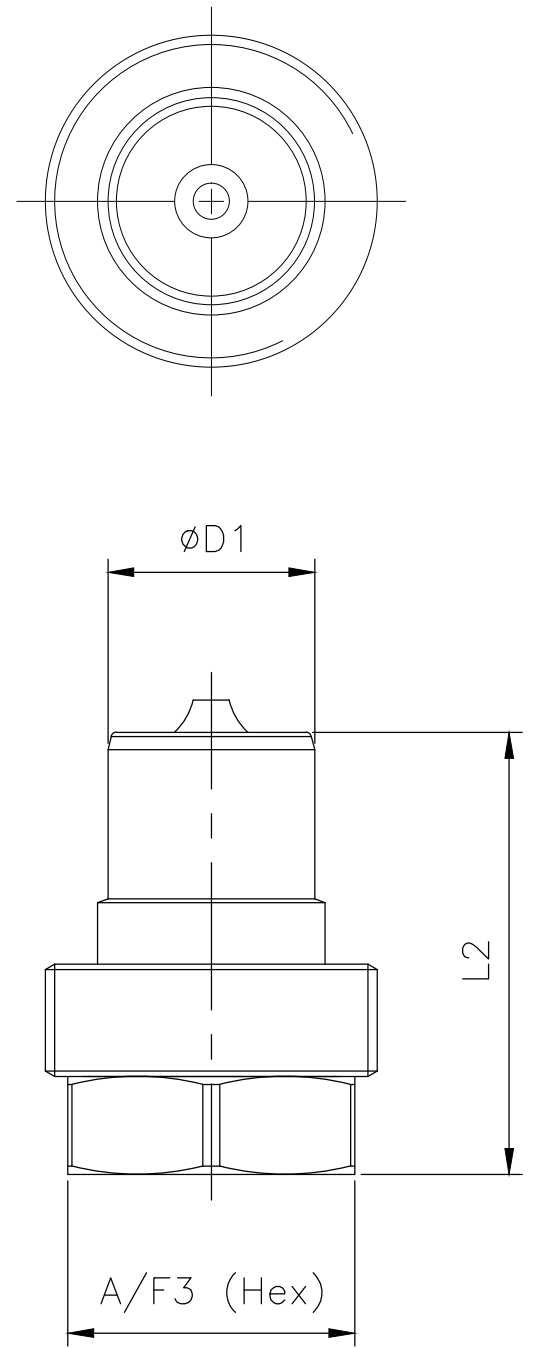


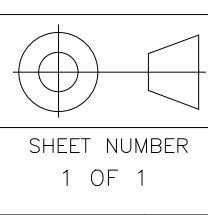
Drawing Number	Body Size	Part Number	Thread Size	L2		D1		A/F3	
				(mm)	(Inch)	(mm)	(Inch)	(mm)	(Inch)
H10065-1	6	PLC06-M-04G	1/4 BSPP	33.00	1.30	14.20	0.56	19.00	0.75
H10065-2		PLC06-M-04N	1/4 NPTF	33.00	1.30	14.20	0.56	19.00	0.75
H10065-3		PLC06-M-06S	9/16-18 UNF	33.00	1.30	14.20	0.56	19.00	0.75
H10065-4	10	PLC10-M-06G	3/8 BSPP	40.50	1.59	19.00	0.75	24.00	0.94
H10065-5		PLC10-M-06N	3/8 NPTF	40.50	1.59	19.00	0.75	24.00	0.94
H10065-6		PLC10-M-06S	9/16-18 UNF	40.50	1.59	19.00	0.75	24.00	0.94
H10065-7	12	PLC12-M-08G	1/2 BSPP	49.00	1.93	20.50	0.81	27.00	1.06
H10065-8		PLC12-M-08N	1/2 NPTF	49.00	1.93	20.50	0.81	27.00	1.06
H10065-9		PLC12-M-08S	3/4-16 UNF	49.00	1.93	20.50	0.81	27.00	1.06
H10065-10	19	PLC19-M-12G	3/4 BSPP	62.00	2.44	28.00	1.10	34.00	1.34
H10065-11		PLC19-M-12N	3/4 NPTF	62.00	2.44	28.00	1.10	34.00	1.34
H10065-12		PLC19-M-12S	1 1/16-12 UN	62.00	2.44	28.00	1.10	34.00	1.34
H10065-13	25	PLC25-M-16G	1 BSPP	73.00	2.87	31.30	1.23	41.00	1.61
H10065-14		PLC25-M-16N	1 NPTF	73.00	2.87	31.30	1.23	41.00	1.61
H10065-15		PLC25-M-16S	1 5/16-12 UN	73.00	2.87	31.30	1.23	41.00	1.61



ISSUE NUMBER	DESCRIPTION	DATE	APPROVED
B	47895	05/03/21	JF
A	ORIGINAL	04/03/21	JF

REVISIONS

ALL DIMENSIONS IN MM UNLESS OTHERWISE STATED
 REMOVE BURRS AND SHARP EDGES
 A RADIUS OR CHAMFER OF 0.2 (MAX) IS PERMITTED IN CORNERS UNLESS STATED
 DRAWING PROCEDURE TO BS8888



PROTECTIVE FINISH
Zinc Chrome III

MATERIAL
Body: Carbon Steel
Seals: Nitrile/PTFE

GENERAL TOLERANCE
± 0.1
UNLESS STATED

SCALE 2:1

SURFACE ROUGHNESS 3.2 UNLESS STATED

DRAWN BY DATE
G.Moore 05/03/21

CHECKED BY DATE
J.Jarvis 05/03/21

APPROVED BY DATE
J.French 05/03/21

The copyright of this document is vested solely in Holmbury Ltd. Reproduction of this document, in whole or in part, is prohibited other than with the express permission of the above company.
 ©HOLMBURY LTD 1999

TITLE
PLC Series - Male

HOLMBURY GROUP
Premier House, 1 Vale Rise,
Tonbridge, Kent, TN9 1TB, UK
www.holmbury.com
Tel: +0044 1732 378 912
sales@holmbury.com

DRAWING NO
H10065

ISSUE NO
B