



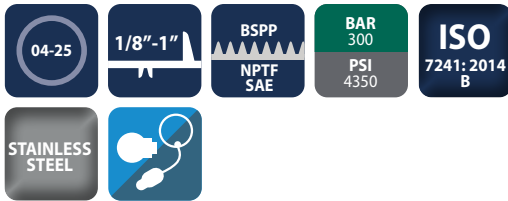
Stainless steel ISO B couplings made to the ISO 7241:2014 Series B Standard dimensions

IBS Series



INTRODUCTION

Holmbury's IBS Series stainless steel ISO B couplings incorporate all the benefits of the carbon steel IB Series couplings, whilst being perfectly suited for corrosive fluids and environments.



CONSTRUCTION

- AISI 316 stainless steel
- Fitted with Viton seals (Other seals available on request)
- Also available in brass (See IBB Series)
- Also available in carbon steel (See IB Series)

FEATURES

- Poppet valves have balanced springs
- Locking ball system allows for quick connection
- Bidirectional flow

ACCESSORIES

- Dust caps, plugs, and seal kits are available for IBS Series

SPECIFICATIONS

- Operating temperatures (With Viton seals): -20°C (-4°F) to 200°C (392°F)

APPLICATIONS

- Corrosive fluids and environments
- Marine
- Offshore/onshore
- Chemical
- Pharmaceutical

PERFORMANCE CHARACTERISTICS

Body Size	IBS04	IBS06	IBS10	IBS12	IBS19	IBS25
	Pressure in bar - Flow in LPM					
	Pressure in PSI - Flow in GPM					
Maximum working pressure (Coupled)	300	300	250	250	250	200
	4351	4351	3626	3626	3626	2901
Burst pressure (Coupled)	900	900	750	750	750	600
	13053	13053	10878	10878	10878	8702
Burst pressure (Male)	1000	950	850	800	800	650
	14504	13779	12328	11603	11603	9427
Burst pressure (Female)	900	900	750	750	750	600
	13053	13053	10878	10878	10878	8702
Rated flow	3	12	23	45	106	189
	0.8	3.2	6	12	28	50

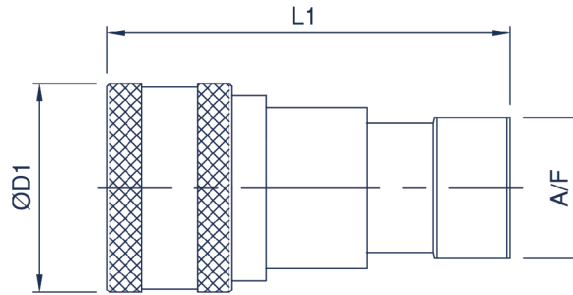
CAPS/PLUGS ACCESSORIES

FEMALE PLUGS	MALE CAPS
IB06-F-PLUG	IB06-M-CAP
IB10-F-PLUG	IB10-M-CAP
IB12-F-PLUG	IB12-M-CAP
IB19-F-PLUG	IB19-M-CAP
IB25-F-PLUG	IB25-M-CAP

Standard colour is red pvc, other colours available upon request

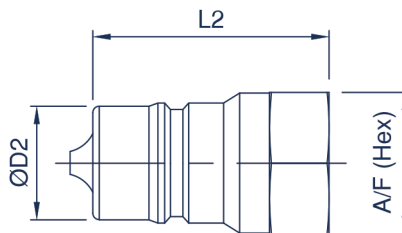
SEAL KITS

IBS04-F-SEAL KIT
IBS06-F-SEAL KIT
IBS10-F-SEAL KIT
IBS12-F-SEAL KIT
IBS19-F-SEAL KIT
IBS25-F-SEAL KIT



IBS FEMALE COUPLING

Body Size	Part Number	Thread Size	D1		L1		A/F	
			mm	inch	mm	inch	mm	inch
04 (1/8)	IBS04-F-04G	1/8 BSPP	24.0	0.94	50.0	1.97	17.0	0.67
	IBS04-F-02N	1/8 NPTF	24.0	0.94	50.0	1.97	17.0	0.67
06 (1/4)	IBS06-F-04G	1/4 BSPP	28.5	1.12	58.0	2.28	19.0	0.75
	IBS06-F-04N	1/4 NPTF	28.5	1.12	58.0	2.28	19.0	0.75
10 (3/8)	IBS10-F-06G	3/8 BSPP	35.0	1.38	65.0	2.56	24.0	0.94
	IBS10-F-06N	3/8 NPTF	35.0	1.38	65.0	2.56	24.0	0.94
12 (1/2)	IBS12-F-08G	1/2 BSPP	44.5	1.75	73.4	2.89	30.0	1.18
	IBS12-F-08N	1/2 NPTF	44.5	1.75	73.4	2.89	30.0	1.18
19 (3/4)	IBS19-F-12G	3/4 BSPP	54.0	2.13	92.0	3.62	36.0	1.42
	IBS19-F-12N	3/4 NPTF	54.0	2.13	92.0	3.62	36.0	1.42
25 (1)	IBS25-F-16G	1 BSPP	64.0	2.52	103.0	4.06	41.0	1.61
	IBS25-F-16N	1 NPTF	64.0	2.52	103.0	4.06	41.0	1.61



IBS MALE COUPLING

Body Size	Part Number	Thread Size	D2		L2		A/F	
			mm	inch	mm	inch	mm	inch
04 (1/8)	IBS04-M-04G	1/8 BSPP	10.8	0.43	31.0	1.22	14.0	0.55
	IBS04-M-02N	1/8 NPTF	10.8	0.43	31.0	1.22	14.0	0.55
06 (1/4)	IBS06-M-04G	1/4 BSPP	14.1	0.56	36.0	1.42	19.0	0.75
	IBS06-M-04N	1/4 NPTF	14.1	0.56	36.0	1.42	19.0	0.75
10 (3/8)	IBS10-M-06G	3/8 BSPP	19.0	0.75	40.0	1.57	24.0	0.94
	IBS10-M-06N	3/8 NPTF	19.0	0.75	40.0	1.57	24.0	0.94
12 (1/2)	IBS12-M-08G	1/2 BSPP	23.5	0.93	45.5	1.79	27.0	1.06
	IBS12-M-08N	1/2 NPTF	23.5	0.93	45.5	1.79	27.0	1.06
19 (3/4)	IBS19-M-12G	3/4 BSPP	31.4	1.24	56.0	2.20	36.0	1.42
	IBS19-M-12N	3/4 NPTF	31.4	1.24	56.0	2.20	36.0	1.42
25 (1)	IBS25-M-16G	1 BSPP	37.7	1.49	63.0	2.48	45.0	1.77
	IBS25-M-16N	1 NPTF	37.7	1.49	63.0	2.48	45.0	1.77

For all other configurations or thread types please contact the sales office.