



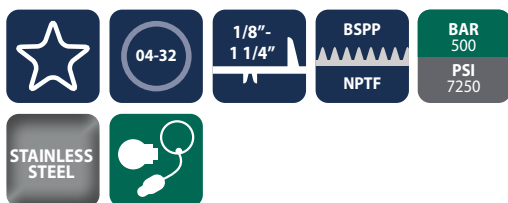
Three and four way high-pressure ball valves

BVS3, BVS4



INTRODUCTION

Holmbury's BVS3 and BVS4 Series high-pressure ball valves are designed to suit a wide range of applications. These valves should not be used as flow control valves and should therefore always be fully open or closed.



CONSTRUCTION

- AISI 316 stainless steel body (Some internal components carbon steel)
- Zinc alloy handle
- Forged steel option available
- Fitted with FKM and POM seals as standard
- Also available in carbon steel (See BVC3, BVC4 Series)

FEATURES

- Floating ball design maximises sealing
- Full bore valves provide unrestricted flow path for negligible pressure drop
- Open to close in 1/4 turn
- Offset handle allows clearance for easy operation

ACCESSORIES

- Valve locking kits and valve handles are available for the BVS3, BVS4 Series



SPECIFICATIONS

- Operating temperatures (With FKM seals): -20°C (-4°F) to 200°C (392°F)
- BVS3 - Ball Valve - Square Body (DN04-32)
- BVS4 - Ball Valve - Square Body (DN04-32)

APPLICATIONS

- Marine
- Offshore
- Pharmaceutical
- Power Generation

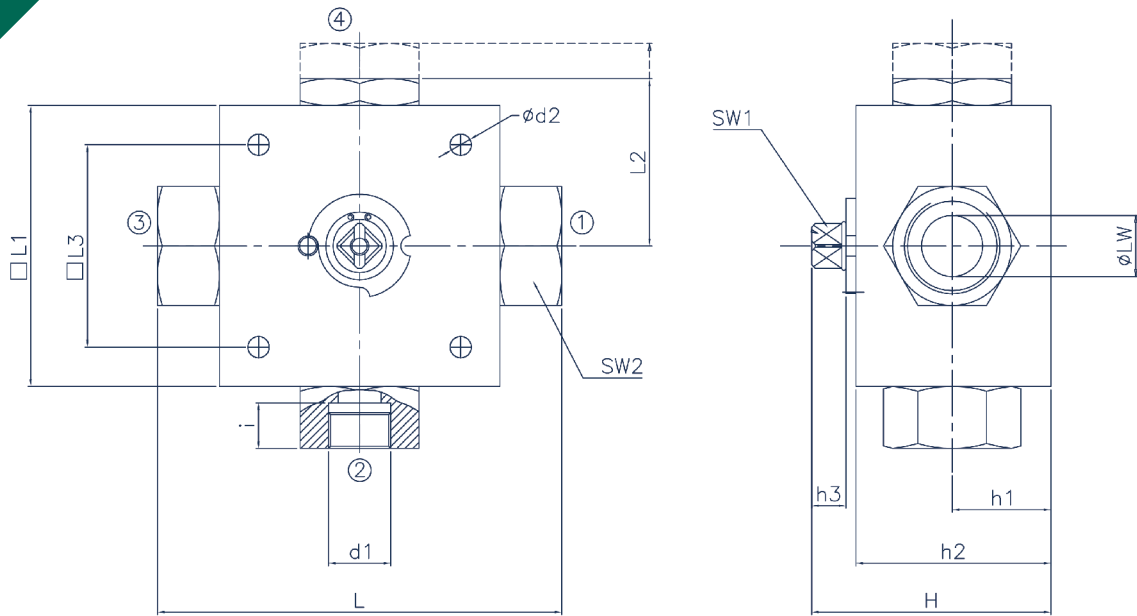
BVS3/4 PERFORMANCE CHARACTERISTICS

Body Size	BVS304 BVS404	BVS306 BVS406	BVS310 BVS410	BVS312 BVS412	BVS319 BVS419	BVS325 BVS425	BVS332 BVS432
	Pressure in bar - Flow in LPM Pressure in PSI - Flow in GPM						
Maximum working pressure	500 7250	500 7250	500 7250	500 7250	315 4568	315 4568	315 4568
Burst pressure	2000 29000	2000 29000	2000 29000	2000 29000	1260 18270	1260 18270	1260 18270
Rated flow	3	12	23	45	100	189	250
	0.8	3.2	6.1	12	26.4	50	66





Three and four way high-pressure ball valves



Part Number Example

Part Number Example	
BVS3D-12-08G-T	Configuration: 3 Way Ball Valve
	Pattern Type: 3D
	DN: 12
	Thread: 1/2 BSPP
	Ball Symbol: T

Ball Symbol
L
T
X

Pattern Type

Pattern Type (See Drawing)	Description
3A	3 Way Ball Valve L Type - Reversing - 45 Deg Closure
3B	3 Way Ball Valve T Type - Reversing - 45 Deg Closure
3C	3 Way Ball Valve T Type 90 Deg - Reversing
3D	3 Way Ball Valve T Type 180 Deg - Reversing
3E	3 Way Ball Valve T Type 180 Deg - Reversing
3F	3 Way Ball Valve T Type 180 Deg - Reversing
4A	4 Way Ball Valve L Type 180 Deg - Reversing
4B	4 Way Ball Valve T Type 90 Deg - Reversing
4C	4 Way Ball Valve T Type 180 Deg - Reversing
4D	4 Way Ball Valve X Type 90 Deg - Reversing

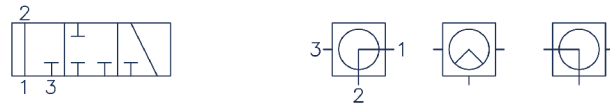
ISO 228/ Female

Part Number *add Pattern Type and Ball Symbol (See Above)	DN	LW			d1	d2	i	L	L1	L2	L3	H	h1	h2	h3	SW1	SW2
		L	T	X													
BVS_-04-02G-__	04	5	5	4.5	G1/8	6.5	10	100	70	42.5	55	57	22	40	11	12	24
BVS_-06-04G-__	06	5	5	4.5	G1/4	6.5	14	100	70	42.5	55	57	22	40	11	12	24
BVS_-10-06G-__	10	9	9	7	G3/8	6.5	14	115	80	46	65	68	27	50	12	14	30
BVS_-12-08G-__	12	12	12	10	G1/2	9	16	135	100	56	80	78	31	60	12	14	36
BVS_-19-12G-__	19	18	18	14	G3/4	9	18	144	100	58	85	93.5	36	73	14	17	46
BVS_-25-16G-__	25	23	23	17	G1	9	20.5	172	118	68.5	85	102.5	47.5	82	14	17	50
BVS_-32-20G-__	32	23	23	17	G1 1/4	9	22	180	118	68.5	85	102.5	47.5	82	14	17	55

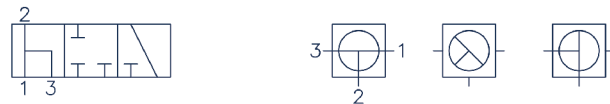
For all other configurations or thread types please contact the sales office.
Further technical information and 3D CAD models available from our sales office.

Pattern Type

Pattern Type 3A : 3 Way Ball Valve L Type – Reversing – 45 Deg Closure



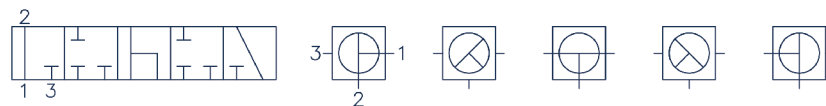
Pattern Type 3B : 3 Way Ball Valve T Type – Reversing – 45 Deg Closure



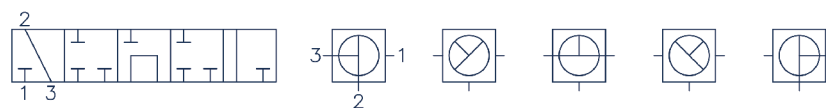
Pattern Type 3C : 3 Way Ball Valve T Type 90 Deg – Reversing



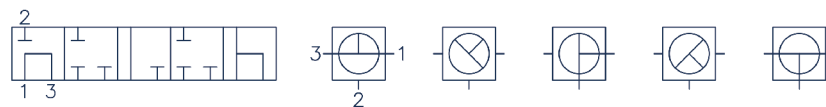
Pattern Type 3D : 3 Way Ball Valve T Type 180 Deg – Reversing



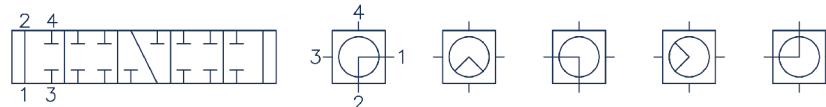
Pattern Type 3E : 3 Way Ball Valve T Type 180 Deg – Reversing



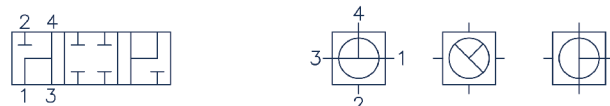
Pattern Type 3F : 3 Way Ball Valve T Type 180 Deg – Reversing



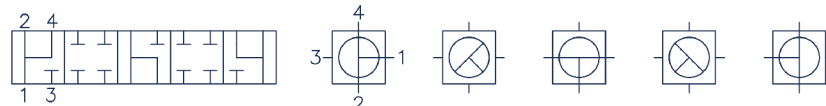
Pattern Type 4A : 4 Way Ball Valve L Type 180 Deg – Reversing



Pattern Type 4B : 4 Way Ball Valve T Type 90 Deg – Reversing



Pattern Type 4C : 4 Way Ball Valve T Type 180 Deg – Reversing



Pattern Type 4D : 4 Way Ball Valve X Type 90 Deg – Reversing

